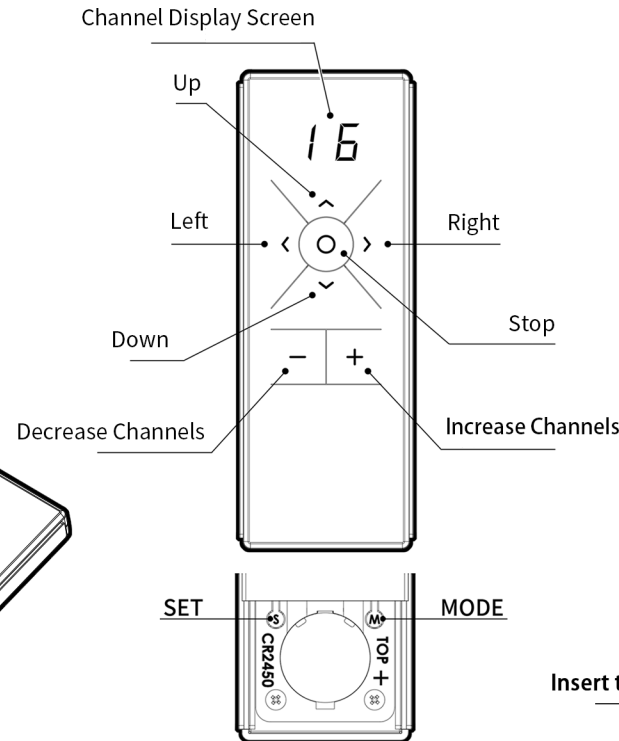
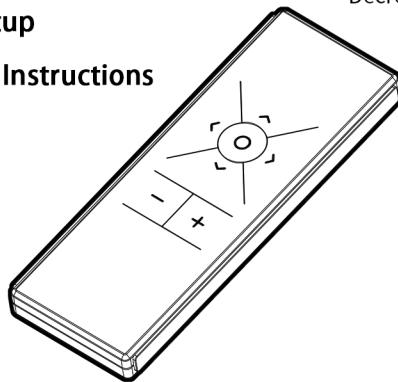


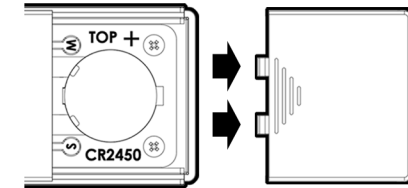
### Contents

- 1-1 Setting the Channel Range
- 2-1 Travel Setup **Left/Right Open (Non-Screw Rod)**
- 2-2 Travel Setup **Up/Down Curtain**
- 3-1 Re-Pairing
- 3-2 Add Remotes **Group Control Setup**
- 4-1 How to Replace Batteries
- 4-2 Product Specifications
- 4-3 Quick Index Setup
- 4-4 Remote Holder Instructions



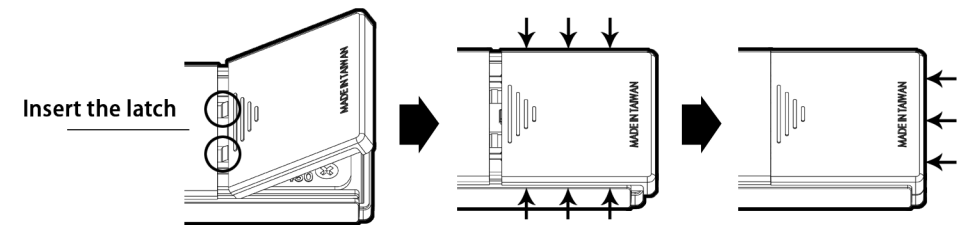
### Remove the Battery Cover

⚠ Push the sliding cover to open.



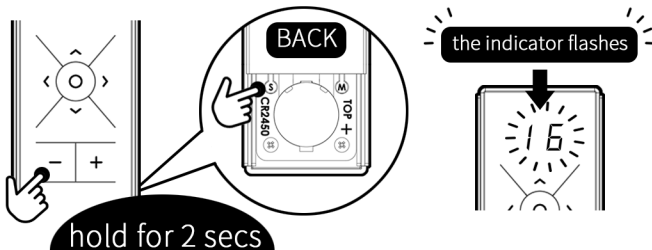
### How to Reattach the Battery Cover

- ① Insert the latch into the slot.
- ② Align the battery cover with the track.
- ③ Push it in.

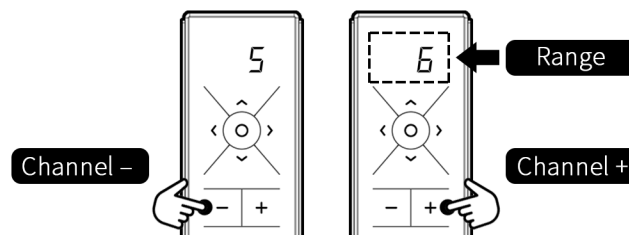


## 1-1 Setting the Channel Range

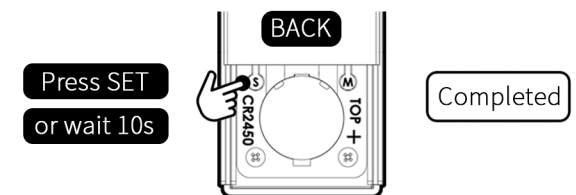
**STEP-1** Hold **SET** and **“-”** for 2 seconds until the indicator flashes.



**STEP-2** Within 10 seconds, use **“+”** and **“-”** to set the channel range.



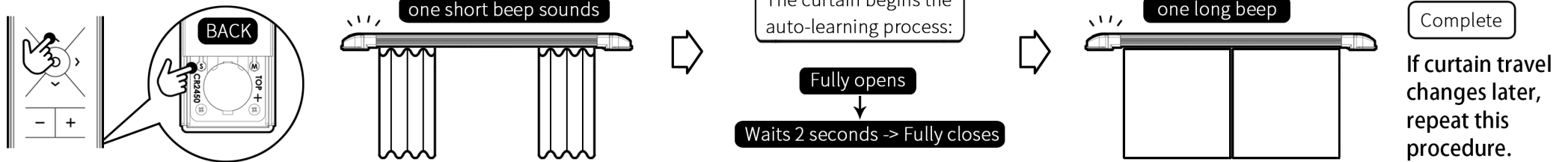
**STEP-3** Press **SET** to confirm, or wait 10 seconds for auto-save.



※ Compatible with **left-open and right-open** curtains, including Belt Curtains, Vertical Blinds, and Window Openers.  
(Not compatible with screw-drive curtains.) Travel limits must be set for each window individually.

## 2-1 Travel Setup

**STEP-1** Press and hold **SET + UP** until one short beep sounds.



※ Suitable for **up-down** curtain systems, including Roller Blinds, Venetian Blinds, Honeycomb Shades, Roman Shades, and Cellular Shades.  
Travel limits must be set for each window.

## 2-2 Travel Setup

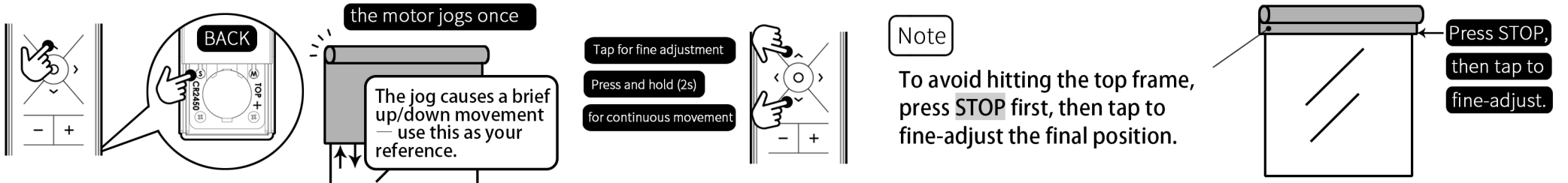
**Before You Start:**

- 1 The upper limit must be set first before the lower limit.
- 2 Ensure direction is correct: UP = up, DOWN = down. If reversed, correct the motor direction before setting limits (see p.4).

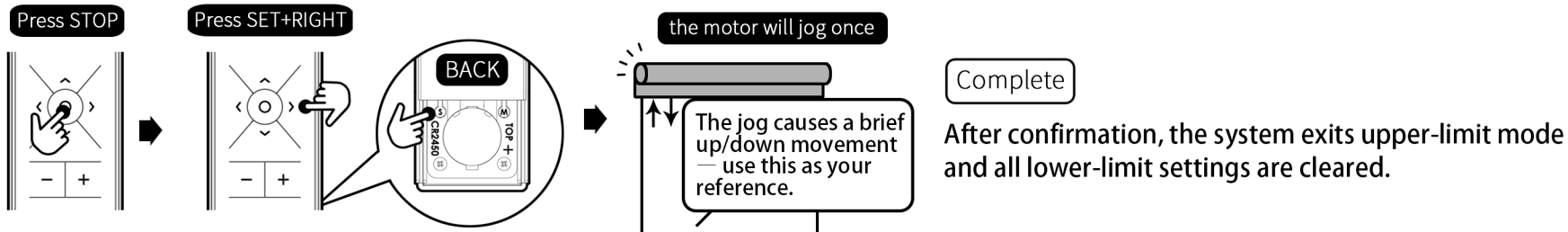
## Upper Limit Setting or Adjustment

**STEP-1** Press **SET + UP** until the motor jogs once, indicating entry into upper-limit mode.

**STEP-2** Use **UP / DOWN** to place the blind at the desired upper limit.



**STEP-3** When the blind reaches the desired position, press **STOP**, then press **SET + RIGHT** to confirm.  
The motor will jog once, indicating the upper limit is saved.

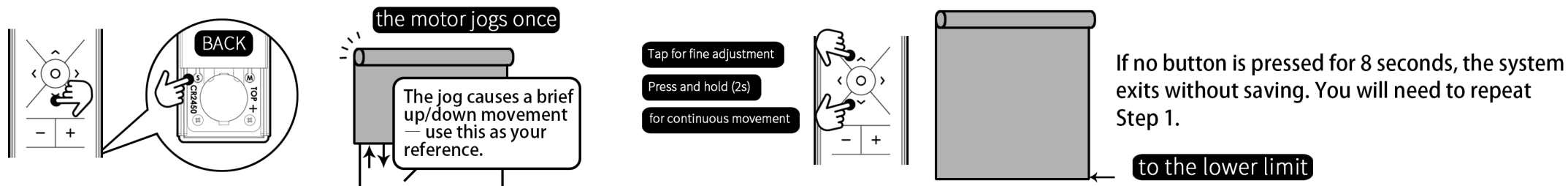


## Lower Limit Setting or Adjustment

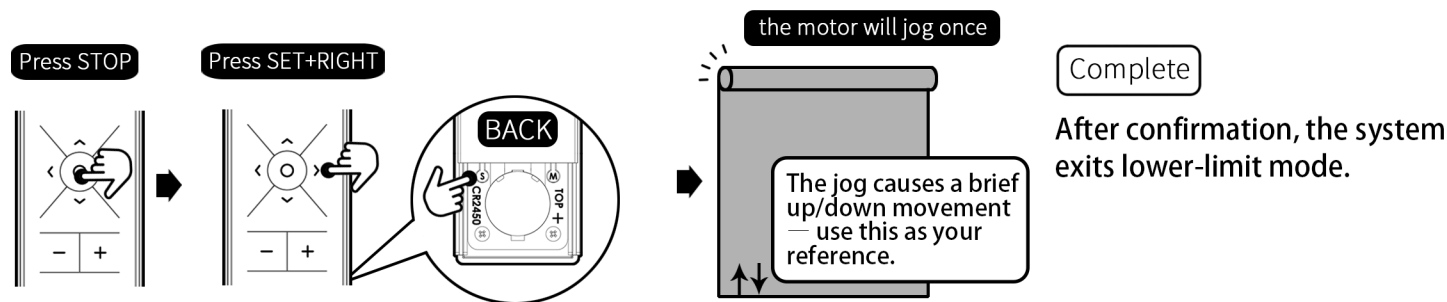
※ Suitable for **up-down** curtain types, including Roller Blinds, Venetian Blinds, Honeycomb Shades, Roman Shades, and Cellular Shades. Travel limits must be set for each window.

**STEP-1** Press **SET + DOWN** until the motor jogs once, indicating entry into lower-limit mode.

**STEP-2** Use **UP / DOWN** to move the blind to the desired lower-limit position.



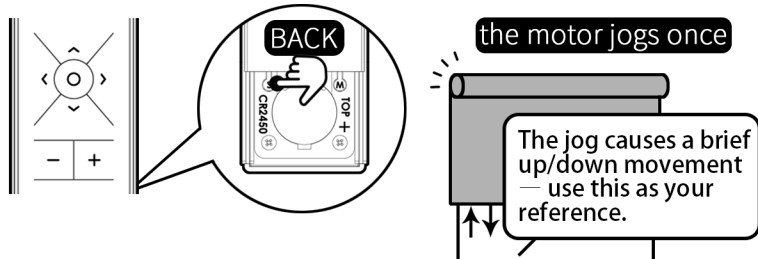
**STEP-3** When the blind reaches the desired position, press **STOP**, then press **SET + RIGHT** to confirm.  
The motor will jog once, indicating the lower limit is saved.



※ Roller Blinds Only

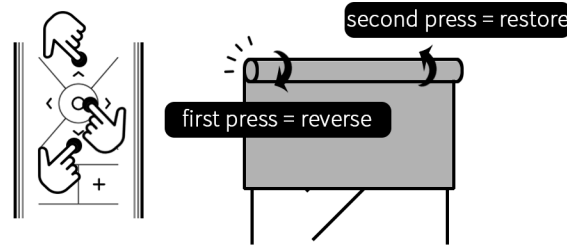
## Swaps the UP and DOWN Directions

**STEP-1** Hold **SET** until the motor jogs once.



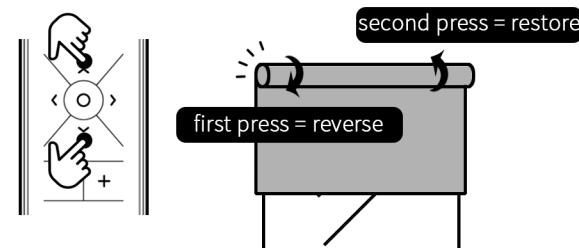
### STEP-2 DC 25 Models

Press **UP + STOP + DOWN** to reverse the direction.  
Press the same buttons again to return to normal.



### DC 25V2 / DC 50 Models

Press **UP + DOWN** to reverse.  
Press again to restore.



#### Completion

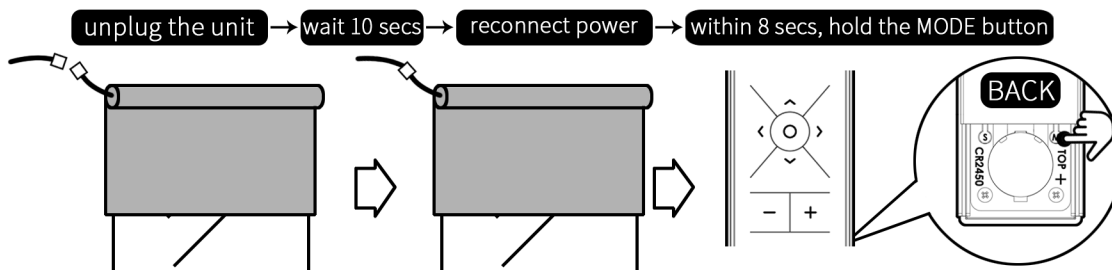
Do not press any buttons after setting.  
The system exits automatically after 8 seconds.

#### Note:

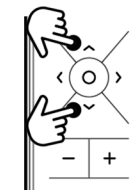
After reversing the direction, reset both upper and lower limits to complete the setup.

## 3-1 Re-Pairing

**STEP-1** Unplug the unit and wait 10 seconds. Reconnect power, then within 8 seconds, hold the **MODE** button on the remote.



**STEP-2** Within the same 8-second window, press **UP + DOWN** together to complete clearing.



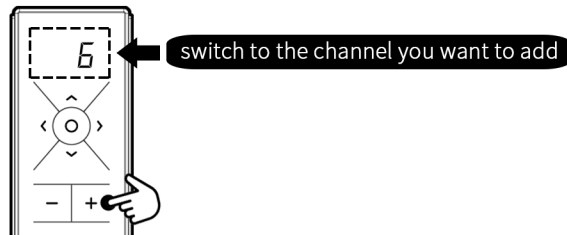
#### Completion

Only this remote's code remains; all others are erased.  
If no new code is added, the existing code is retained.

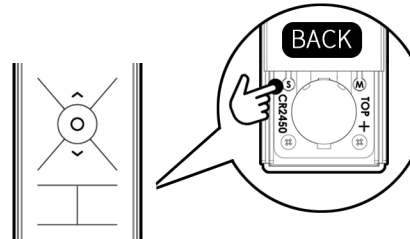
### 3-2 Add Remotes

※ This method allows group control for multiple windows.

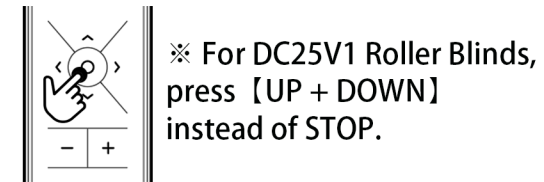
**STEP-1** Use Channel **+/−** to switch to the channel you want to add.



**STEP-2** Hold **SET** on the already-paired remote. The unit will start beeping.

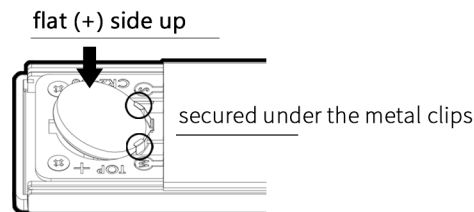


**STEP-3** Press **STOP** on the remote for the channel you want to add. A beep confirms successful pairing.

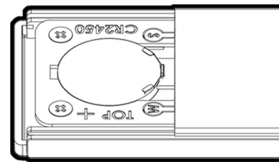


### 4-1 Battery Replacement

**1** Insert the battery with the flat (+) side up, secured under the metal clips. Slide it into the slot at a slight angle.



**2** Done.



### 4-2 Specifications

Battery: CR2450 3V (non-rechargeable lithium)  
Dimensions: 13 × 4.8 × 1.1 cm  
Standby Current: < 1 μA  
Modulation: OOK  
Encoding: Fixed code  
Frequency: 433.92 MHz  
Antenna: On-board, 0 dBi  
Weight (with battery): 69 g

### 4-3 Quick Index Setup

**Channel Range:** (Step A) Hold SET + Channel Minus (Step B) Select the desired range (Step C) Press SET to confirm

**Travel Setup – Left/Right Curtains (excluding screw-rod curtains):** (Step A) Press SET + UP (Step B) The travel runs automatically and completes the process

**Travel Setup – Up/Down Curtains:** (Step A) Press SET + UP to enter upper-limit mode (Step B) Move the curtain to the desired upper position (Step C) Press SET + RIGHT (Step D) Press SET + DOWN to enter lower-limit mode (Step E) Move the curtain to the desired lower position (Step F) Press SET + RIGHT

**Swap UP / DOWN – Roller Blinds:** (Step A) Hold SET (Step B) For DC25 V2 or DC50 models: press UP + DOWN / For DC25 V1: press UP + STOP + DOWN (Step C) Re-set both upper and lower limits

**Re-Pairing:** (Step A) Unplug power, wait ten seconds, restore power (Step B) Within eight seconds, hold MODE (Step C) Press UP + DOWN to confirm

**Add Remotes:** (Step A) Switch to the channel you want to add (Step B) Hold SET on the paired remote (Step C) On the channel to add, press STOP (Step C)(for DC25 V1) press UP + DOWN instead

### 4-4 Remote Holder Instructions

